



Greensborough Primary School - 2062

130 Grimshaw Street Greensborough 3088 Phone: 03 9435 1496

Email: greensborough.ps@edumail.vic.gov.au

Website: www.greensborough.vic.edu.au

Borough Bulletin ***21 May 2020***

<i>Friday 22 May 2020</i>	Collect Week 7 & 8 Learning Packs – Grades 3 to 6 only Drop off & Pick up time – 11:30AM to 1:30PM Drop off Green Learning Packs for correction
<i>Monday 25 May 2020</i>	Curriculum Day – Pupil free No OSHClub onsite
<i>Tuesday 26 May 2020</i>	Return to School – Prep to Grade 2 – return Green Learning Pack Staggered DROP OFF times – Prep – 8:45AM to 9:00AM – Grades 1 & 2 – 9:00AM to 9:15AM Staggered PICK UP times – Prep – 3:15PM to 3:30PM – Grades 1 & 2 – 3:30PM to 3:45PM
<i>Monday 8 June 2020</i>	Queen's Birthday Public Holiday
<i>Tuesday 9 June 2020</i>	Return to School – Grades 3 to 6
<i>Friday 19 June 2020</i>	School Reports to go home
<i>Monday 22 June 2020</i>	Parent – Teacher Interviews By Phone ONLY – At mutually convenient times
<i>Tuesday 23 June 2020</i>	Parent – Teacher Interviews By Phone ONLY – At mutually convenient times
<i>Wednesday 24 June 2020</i>	Parent – Teacher Interviews By Phone ONLY – At mutually convenient times
<i>Thursday 25 June 2020</i>	Parent – Teacher Interviews By Phone ONLY – At mutually convenient times
<i>Friday 26 June 2020</i>	Last Day of Term 2 – Early Finish – 1:30PM
<i>Tuesday 04 August 2020</i>	MPS School Photo Day

Principal's Report

The countdown to our return to face-to-face teaching is well and truly underway. Our Prep – 2 students have only '5 sleeps' until they are back in class with their teachers on Tuesday 26th May and we're all looking forward to it. Since the announcement by Daniel Andrews last week, we have been busy planning for our students and staff to transition back to school. DET has declared Monday 25th May a Curriculum Day, so teachers can put the final touches to our preparations and we're pleased to have the all the staff back onsite together. Once our Grade 3 - 6 students return on Tuesday 9th June, we'll be back on track to achieve our learning goals and targets.

Yesterday's COMPASS post contained details for the staggered return of students and important information for families about restrictions for adult visitors to schools, and this post has been reprinted in this newsletter. I urge families to discuss these arrangements with your children so they are prepared when they arrive at school.

After students have settled back into their class programs we will begin Literacy and Numeracy assessments so that teachers have baseline data of current student achievement levels, and can use this to plan their teaching and learning programs going forward. We will also be able to identify students who may require additional intervention in Literacy and Numeracy and plan the provision of this support.

Sincere thanks to our Education Support staff who have been outstanding in their efforts to support students who have been attending on-site for care and supervision during this term. Whilst teachers have been rostered to attend school to have oversight of students, it is the ES staff who have had direct supervision and worked with students on a daily basis, as teachers answered emails and corrected work on Seesaw, etc. We cannot speak highly enough of the aides' efforts during this time and we are greatly appreciative of their work.

Semester One Reports and Parent/Teacher Interviews.

The Department of Education and Training has adjusted the expectations of Student Reports for Semester One in recognition of the transition to remote and flexible learning during Term Two. While our school has continued to deliver its teaching and learning program and monitor the achievement and progress of each student, there have been some unprecedented changes to our usual program.

Written reports for each student will be provided, however they will be in a modified format in line with DET guidelines. With the guidelines currently in place, parents will be offered the opportunity to discuss their child's progress by phone, rather than the usual face-to-face interview. More information about the revised report format for Semester One and Parent/Teacher interviews will be sent home in the coming weeks.

Dress In Blue Day

Thank you to everyone who supported this fundraiser by dressing in blue or making a donation when they collected their last Home Learning Packs. Over \$155 was raised for the Police Legacy Remembrance Foundation - a terrific effort! A photo page is included later in the newsletter.

Thank you to families for your continued support during remote and flexible learning. Thank you also to our School Captains and Vice Captains for their excellent work with our assembly PowerPoint presentation each week.

Angela Morrìtt

Principal

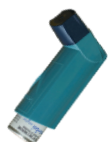
2021 Prep Enrolments

If any families know anyone who is coming to Greensborough Primary next year, please encourage them to register their details as soon as possible, (this includes siblings of current students). We have already had a number of enquiries and school tours for places in 2021 and the sooner we get a sense of our intake for next year, the sooner we can start planning for grade structures.

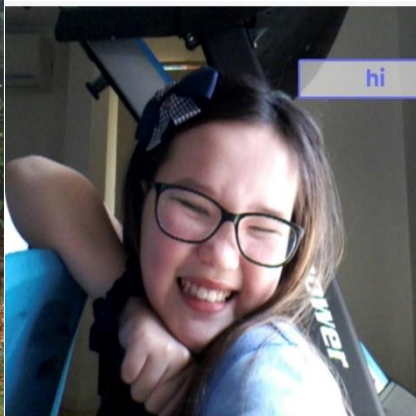
Return of medication

At the end of Term 1 we sent home Ventolin, spacers, epipens and various other medications held in sickbay to treat your children. I would just like to remind all parents and carers that with the return to school could you please return your child's school medication.

Thank you.



Dress In Blue Day



\$155 raised

Return to School Protocols – COMPASS Post

Thank you once again for your support and hard work during these weeks of home learning. We are looking forward to our students in Grades Prep – 2 returning next Tuesday 26th May to their classrooms and teachers, followed by the Grades 3- 6 on Tuesday June 9th. We are closely following DET advice and guidelines for on-site schooling and have implemented the protocols below. We ask families to discuss these new arrangements with your children, so they are prepared when they arrive at school.

Drop-off times will be staggered:

Preps will arrive between 8.45am – 9.00am

Grades 1 - 2 will arrive between 9.00am – 9.15am. (Siblings of Prep children may be dropped off between 8.45am – 9.00am also. If any parents of Grade 1 - 2 children need to drop students at 8.45am due to work commitments, please ring the office)

To assist with social distancing between adults at the gates, we will have three entry points to the school:

- Main gate in Horonda Street
- Bottom gate in Lorimer Street
- Top gate on corner of The Circuit and Grimshaw Street (near Heritage building).

It's essential that parents do not sit in cars as we have to move students into and out of the carparks quickly for the two waves of arrivals and departures. Parents will 'Kiss and Drop' and not enter school grounds. We will have 2 staff members at each gate, to greet students and take them to their classrooms.

Pick-up times will also be staggered:

Preps (and siblings) will leave between 3.15pm and 3.30pm

Grade 1 - 2 will depart at 3.30pm.

Parents are to advise school on Tuesday morning at drop-off which gate they choose for collection point and staff will escort them and stay until parents arrive.

To support the health and wellbeing of students and staff:

- Regular hand hygiene will be undertaken, with sanitisers and soap dispensers in every classroom.
- Students will be allowed to use playground equipment and use sanitiser at beginning and end of recess breaks.
- DET has implemented additional cleaning protocols and play equipment will be wiped down after each break and high touch areas in the school are cleaned throughout the day.
- Children are to have their own water bottles for use and not use drinking fountains.

Children and staff who are feeling unwell MUST stay home.

Restrictions on access to school site are in place and only staff and maintenance workers will be allowed on site. Parents are not to enter school grounds or classrooms. Parents are to contact the school by phone or email and make payments online. If parents need to go to the Office for any reason, they are required to ring the school before entering the grounds.

These guidelines are from DET and are not part of our normal school culture. However these are not usual times and the safety of our students, staff and community members is our priority. Thank you for your continued support and understanding during this time.

Home Learning Packs:

- Students in Grades 3 - 6 will return their current pack this Friday 22nd May and collect their last Home Learning Pack for Weeks 7 & 8 between 11.30am – 1.30pm.
- Students in Grades P - 2 will bring their current Home Learning Packs to school when they resume on Tuesday 26th May and do not need to return it on Friday.

Library News

It's very exciting that we will be seeing the Preps and 1/2s next week. It has been quite a while since we have had a library lesson. I'd just like to remind everyone – can they please make sure that when your child returns to school that they bring back their library books. The children can place them in their class tub.

If you have a child in Grade 3-6 and are coming to pick up Weeks 7 and 8 work on Friday you can also return library books then. The green returns tub will be outside with the take home bags.

A reminder that we can still have free access to Story Box Library. Many families have taken advantage of this and there are so many books that your child can listen to. I have been incorporating some of their books into my lessons – but it is still wonderful that in such a short time we have had nearly 700 views online.

<https://storyboxlibrary.com.au/>

The log in is:

User name green01

Password green01

Looking forward to seeing everyone next week!

Happy Reading

Jen Farley

Teacher librarian



Story Time with Mrs D

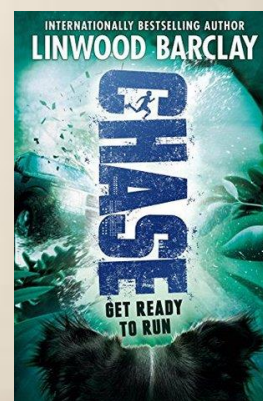
Target audience – Grades 3 to 6

Once upon a time...

Mrs Donaldson has been reading the chapter book 'Chase' by Linwood Barclay in 5 to 10 minute blocks and sharing it on the school blog each school day.

If you haven't had a chance to listen to it yet, please use the embedded link below:

<http://2020athomelearningresources.global2.vic.edu.au/year-5-6-assigned-learning-tasks/read-to-by-mrs-donaldson/>



'Thunk It' with Mr Stephens

Where Does Your Imagination Take You?

Hello Families of Greensborough Primary School,

Everyone can thunk! Thunking is a simple activity that anyone of any age can do. All it takes is a simple idea, prompt or message that makes you think about the world in a totally new way.



Last week I held a 'Design Your Own Dream Home' competition as we explored what makes us unique and how we can express our unique identity. I thoroughly enjoyed the submissions by various students. Stephanie from Prep took out the prize with an amazing video explaining her dream home. You can view this submission on the blog!

This fortnight will be the last instalment of 'Thunk It With Mr Stephens' as we make the transition back to school. I have loved all the fantastic thunks over the past few weeks on topics that have included time travel, commemoration, dream homes as well as other bits and pieces from different student thunks. It has been a privilege and something I hope has provided some entertainment in these challenging times.

If you are wondering what this thunking is all about, visit the 'Thunk It with Mr Stephens' page on the blog. You will find this fortnight's thunk titled 'Journey into Imagination'. So far the winners have been from P-4. I would love to hear some more thunks from students in 5 & 6! It is open to everyone!

Feel free to leave a comment on the blog (using the link below) or send me an email with your contribution.

<http://2020athomelearningresources.global2.vic.edu.au/thunk-it-with-mr-stephens/>

For the final time, Happy Thunking!

Mr Stephens

Link to Greensborough Primary School Blog:



<http://2020athomelearningresources.global2.vic.edu.au/>

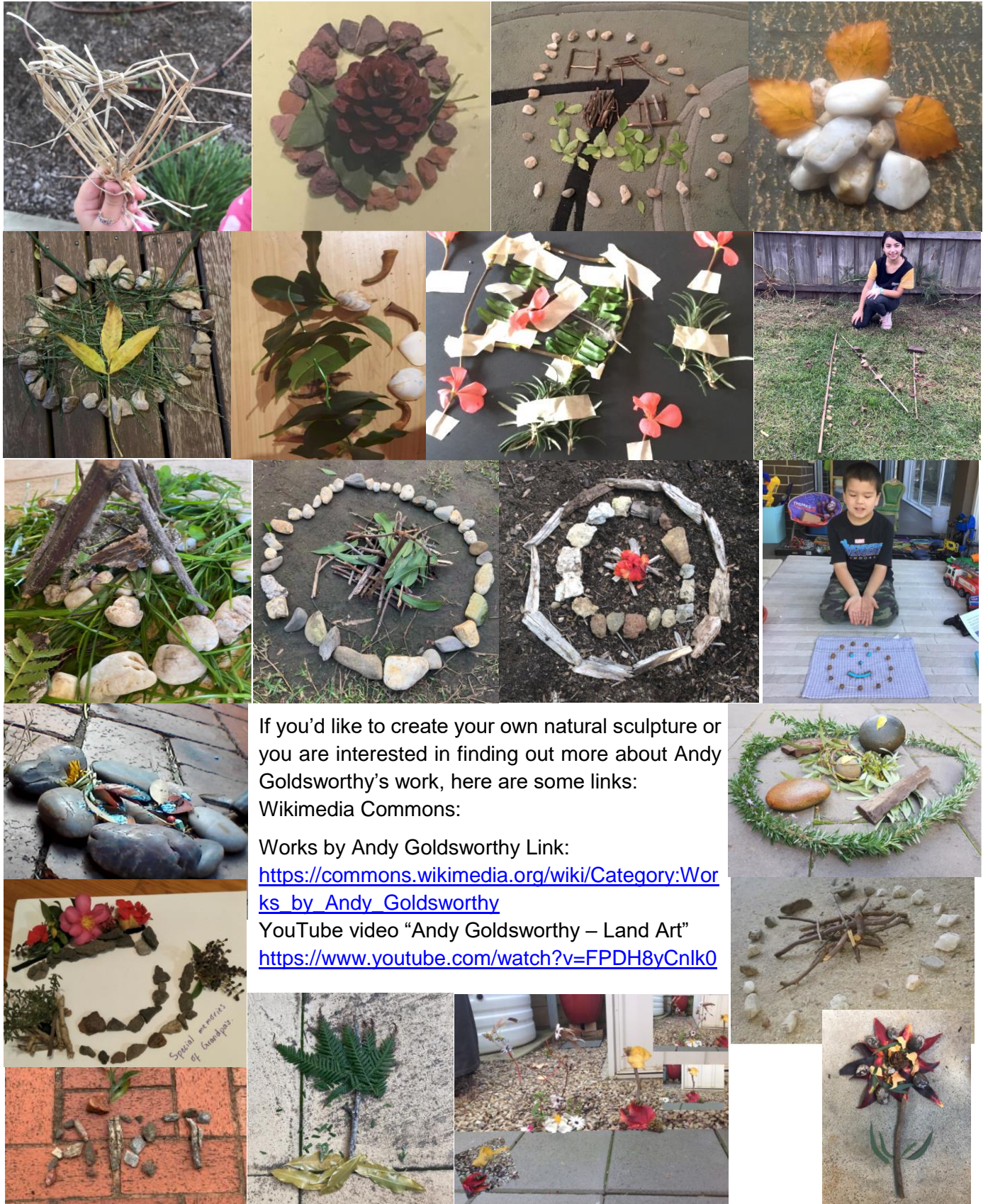
Cooperation **A**chievement **R**espect **E**mpathy

ART

Andy Goldsworthy Inspired Natural Sculptures

As part of Grade 3 and 4's Home Learning for Art, our students were asked to create a 3D sculpture using natural materials found in their garden.

They collected materials from nature such as wood, sticks, stones, leaves, flowers and sand, then observed the art elements of line, shape, space, pattern, form and colour to create their own sculpture. Congratulations everyone on all your very different presentations!



WELL BEING WEDNESDAY

Here are some of the contributions from our wonderful families:

**WELLBEING
WEDNESDAY** 🍌 🍌



**4D Harry Potter
Puzzle with my
sisters**



WELL BEING WEDNESDAY

Continued:

wellbeing
Wednesday



today we went to
port melbourne
beach and we
had a good run
then i made a
pool for my
barbies.



wellbeing
Wednesday



Mrs Darling...

Grade 6 Transition

Dear Grade 6 Families,

You will have received your Application for Year 7 Placement 2021 in the mail last week.

Please take your time when completing the form and ensure all required sections are filled in – including signatures. It is also required that you include your 'designated neighbourhood school' which can be found at <https://www.findmyschool.vic.gov.au/>

The completed 2021 Year 7 Placement Forms are due back to the school no later than Friday 29th May 2020. Meghan has attached a copy of the form to the school's website for your convenience.

If you require any assistance or have any questions, please email me at grima.maria.m@edumail.vic.gov.au

I look forward to seeing you all very soon!

Warm regards,

Maria Grima

Pupil of the Week

Term 2 ~ Week 3

Prep	<i>Jay</i>	For continuing to be an incredibly enthusiastic learner and sharing his new understandings and learning on Seesaw. Great job!
Grade 1/2 A	<i>Joel J</i>	For an amazing effort when completing all of his tasks in both his workbooks and when using Seesaw.
Grade 1/2 B	<i>Ethan</i>	For displaying enthusiasm and a high standard of working on Seesaw. Keep it up!
Grade 3/4 A	<i>Macy</i>	For her magnificent advertisement she created for her Passion Project on 'The Origins of Mythical Creatures'.
Grade 3/4 B	<i>Josh</i>	For taking pride in his handwriting and the quality of his work. Keep working hard!
Grade 5/6 A	<i>Sienna</i>	For her excellent work during Inquiry learning about bank statements and budgets.
Grade 5/6 B	<i>Tobias</i>	For his sensational attitude and commitment to his home learning.
Chinese	<i>Stephanie Prep</i>	For her fabulous work ethic and efforts in completing all set tasks for week 3 & 4.
Library	<i>Toby 5/6B</i>	For completing his genre work to a very high standard. He was able to identify words that indicated a particular genre. Well done, Toby.
Art	<i>Charlie Prep</i>	For showing that he could draw 12 different types of lines and fantastic presentation in his book.
PE	<i>Sienna N 3/4A</i>	For providing an excellent video with commentary showing her throwing technique. Also, I loved your suggestion of a points system for the game 'Not in my backyard'. Well done!
STEM	<i>Emma 5/6B</i>	For the wonderful effort she put into creating her food web.

Cooperation **A**chievement **R**espect **E**mpathy

Pupil of the Week

Term 2 ~ Week 4

Prep	<i>Charlie</i>	For consistently demonstrating a high standard of work and excellent presentation of his learning. Well done!
Grade 1/2A	<i>Sila</i>	For consistently completing all of her work to an excellent standard and for presenting her work beautifully.
Grade 1/2 B	<i>Edward</i>	For being persistent and determined to write. I was so impressed with your Big Write about the message in a bottle!
Grade 3/4 A	<i>James</i>	For striving to add more detail to his writing. Keep up the great work James!
Grade 3/4 B	<i>Jackson T</i>	For the terrific commitment shown to his remote learning. Well done mate!
Grade 5/6 A	<i>Emma</i>	For always doing her best work and promptly uploading it to Seesaw. Keep it up!
Grade 5/6 B	<i>William</i>	For his great effort in his Big Write 'Frozen in Time'.
Chinese	<i>Sienna W 5/6B</i>	For always trying her best and showing great enthusiasm towards Chinese learning. Very well done for week 3 & 4
Library	<i>Ethan 1/2B</i>	Ethan's drawings and explanation of why he liked the characters from Dog Man was excellent. Well done, Ethan.
Art	<i>Jesse 3/4B</i>	For his use and arrangement of materials for the Natural Sculpture project.
PE	<i>Brendan 5/6A</i>	For providing great videos of 'Throwing Golf' which showed very good throwing technique. I loved how you provided your scoring sheet too. Well done!
STEM	<i>Louis 5/6B</i>	For his fantastic food web and animal research

Cooperation **A**chievement **R**espect **E**mpathy

Diamond Valley Community Support Financial Assistance

Diamond Valley Community support (DVCS) is an independent not-for-profit organisation that provides direct aid, assistance, support and information for people who live in the Banyule City Council area and have an address showing on their Centrelink card in one of the following suburbs: Briar Hill, Bundoora (part of), Eltham North (part of), Greensborough (part of), Lower Plenty, Montmorency, St Helena and Watsonia.



DIAMOND VALLEY
community support

DVCS services currently include a Back to School Program that provides eligible families a cheque for **\$100 per child** (up to \$500 per family). The cheque will be made out to the school, and is to be used for educational purposes, i.e. Subject Contributions, camps, excursions, and so on. DVCS is located at Shop 378a Level 3, Greensborough Plaza. Ph: 03 9435 8282 / 03 9435 5440.

Oz Child School Counselling Services



Families new to the school may not be aware, that at Greensborough Primary our students are able to access counselling provided by the OzChild organization. This is a great service to families as it means there is very little disruption to the students' day as there is no travel time and parents don't need to take time off work. In order to receive counselling families need to obtain a Mental Health Care Plan and a referral letter from your GP and return them to school and we will forward them to OzChild.

We have been very fortunate to have had excellent health professionals provided to us and our current counsellor is no exception. If any families would like further information about this service please contact Margaret or myself at any time.

Family Information Details

Thank you to all the families who returned the forms with student information details that were sent home in Term 1. Unfortunately, not everyone has returned their forms. We would be very grateful if you could check around at home and return your form. It is important that all families check these details and return them to us with any changes to contact numbers and also medical information to ensure student safety and speedy communication with parents.

Families are also asked to check information re employment details as these may have changed recently due to Victoria's State of Emergency and the Lock-Down Restrictions. Student funding from the Government is driven by the levels of schooling of students and their family and community characteristics, e.g. types of employment, so it is important we enter the correct data to receive the correct funding entitlement for our students.

School Accounts, Uniform Orders & Payments

Due to the Covid-19 restrictions and social distancing rules all payments of accounts must be made online. Uniform orders can be made over the phone as well. To process payments you will require the school's bank account details or you can make a payment by credit card over the phone. Please contact Meghan by phone for account details, or to make a payment remotely on **(03) 9435 1496**



CSEF – Camps, Sports and Excursion Fund

The Camps, Sports and Excursions Fund (CSEF) provides payments for eligible students to attend activities like:

- School camps or trips
- Swimming and school-organised sport programs
- Outdoor education programs
- Excursions and incursions.



Due to the Covid-19 Shut-Down some families who were ineligible to apply for the CSEF may have had a change to their financial circumstances and may now qualify for a Health Care Card.

Families holding an eligible Health Care Card, Pensioner Concession Card, Veterans Affairs Gold Card, or a temporary foster parent can submit a CSEF form to the office when school returns.

A CSEF application form can be found on the school's website on: <https://greensborough.vic.edu.au/forms/>. Please note due dates have been extended beyond the period of the Shut-Down.

When filling in your form you can list more than one student if they are attending the same school. You will need to present a copy of your valid Health Care Card with your completed form.

Submitting your CSEF form can be done in person by posting your complete form or you can email the form and copy of your card to greensborough.ps@edumail.vic.gov.au now. Call Meghan if you have any questions.

Payments amounts for 2020 are:

- \$125 per year for each eligible primary school student

Uniform Support for Victorian Prep Students only

STATE SCHOOLS' RELIEF

With the icy winter fast approaching Prep students who are eligible for the Camp, Sports and Excursions Fund (CSEF) can receive uniform support. From Term 2, eligible 2020 Preps can apply for a State Schools' Relief Voucher to put towards the purchase of a winter jumper and a pair of winter pants. Your choice of items can include one windcheater or bomber jacket or polo shirt as a winter jumper, and one pair of tracksuit pants or grey trousers as a pair of winter pants. Your voucher should cover most of the purchase price of these items but there may be a slight amount owing to cover the gap.

Call Meghan to discuss your eligibility and what items you can order – **(03) 9435 1496**

RED SHIELD APPEAL

During the month of May every year the Salvation Army holds its annual Red Shield appeal. This year with the Covid-19 shut-down they are doing things a little differently. You will not be seeing the Salvo representatives out and about at shopping centres, intersections or knocking at your door across Greensborough, instead they are going digital.

All donations received this year will go directly towards assisting families and individuals who are at risk in our community; people experiencing hardship due to reasons beyond their control. This appeal's donations are more important than ever, due to the vulnerability of many in our community due to Covid-19. Many are experiencing financial hardship due to reduced or loss of work and many may also be experiencing relationship breakdowns due to social isolation or increased mental concerns.

Your donation will help to ease some of these concerns. Please visit:

<https://digitaldoorknock.salvationarmy.org.au/t/greensborough-salvos>